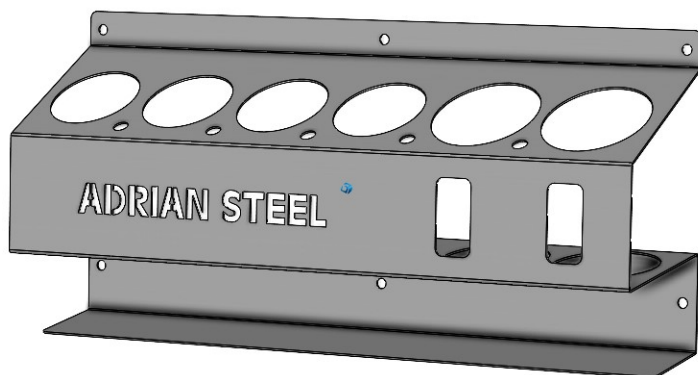




## SB & 1lb TANK BRACKET, 23"



PRODUCT WEIGHT  
**6.6 LBS**

WIDTH x DEPTH x HEIGHT  
**23" x 11" x 5"**

CAPACITY  
**5LBS**

COLOR  
**GRAY**

CATALOG NUMBER  
**66762**

### PRODUCT FEATURES

**Spray bottle & 1lb LP tank bracket (23") is intended to be mounted inside the rear door panels or other places inside a cargo vehicle depend on location. Four nuts and bolts are used to fasten to final surface.**

**SEE PAGE 2 FOR APPLICATION NOTES AND ACCESSORIES, OTHER PRODUCTS THAT WORK WITH THIS UNIT.**



**CATALOG NUMBER      66764-G**

***PRODUCT APPLICATION***

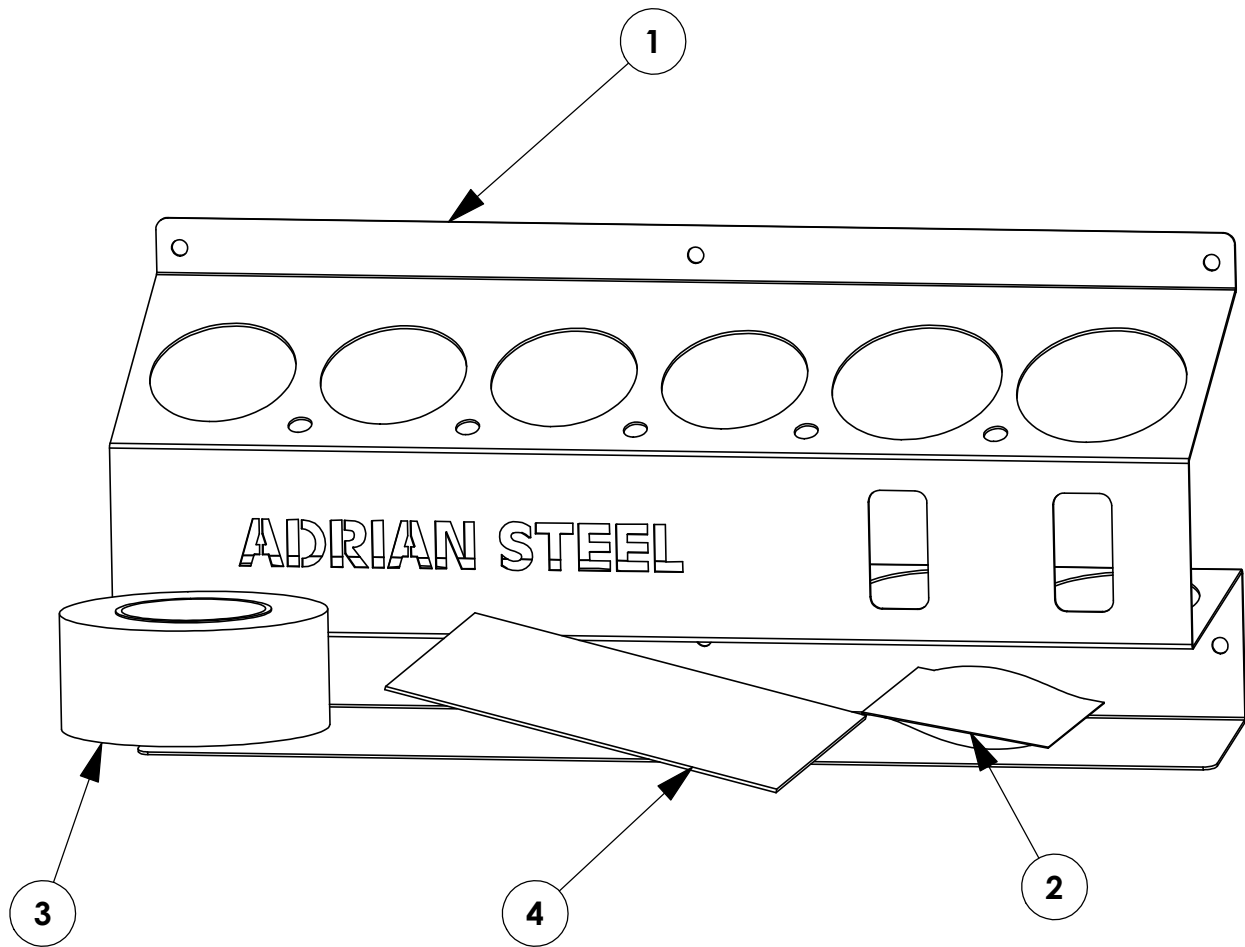
**This product is designed to be installed using fastener bag BAG65529.**

***ACCESSORIES THAT WILL WORK WITH THIS PRODUCT***

<b><i>CATALOG NUMBER</i></b>	<b><i>DESCRIPTION</i></b>
<b>66764-G</b>	<b>SB&amp;1LB BRACKET 23"</b>
<b>BAG65528</b>	<b>DIVIDER AD SERIES SHELVING</b>

***SPECIAL APPLICATION NOTES***

INSTR. NUMBER : <b>66763</b>  PART NUMBER : <b>66764</b>  PART • <b>ASSEMBLY INSTRUCTIONS</b> DESC. • <b>FOR 66762</b>	PG:	REV:	ITEM NO.	PART NUMBER	DESCRIPTION	QTY.
	<b>1</b>	<b>B</b>	1	66762-G	SB&1LB TANK BRACKET, GRAY	1
			2	BAG65528	BAG FOR LONG CAULK HOLDERS	1
			3	26650-0	Foam Tape, 0.25x2.5x40.0	1
			4	65527	Install Instr. For CHL4 & CHS5	1



**GET TO KNOW THE VEHICLE** - AT THE BEGINNING OF ANY INSTALLATION, CHECK THE LOCATION OF THE FUEL TANK, FUEL LINES, BRAKE LINES, HIGH VOLTAGE BATTERIES AND WIRING HARNESSSES TO AVOID INJURY OR PROPERTY DAMAGE FROM TOOL CONTACT.

**SEAL ALL EXTERIOR HOLES** - ALL INSTALLATION HOLES SHOULD BE SEALED WITH BUTYL TAPE OR SILICON TO PREVENT WATER AND EXHAUST GASES FROM ENTERING THE VEHICLE.

**CONTROL DRILL DEPTH** - TO AVOID DAMAGE TO THE VEHICLE, USE A DRILL STOP OR CLEARED STEP BIT WHEN DRILLING INSTALLATION HOLES.

**ALWAYS ADD PRIMER** - WHEN ADDING INSTALLATION HOLES BE SURE TO USE A SELF-ETCHING PRIMER TO PREVENT CORROSION, FASTENER FAILURE AND INJURY.

**MOUNTING POINTS MUST HAVE METAL-TO-METAL CONTACT** - USE PROVIDED MOUNTING SPACERS TO ACCOMMODATE FOR VEHICLE FEATURES, CARPET OR SUBFLOORS.

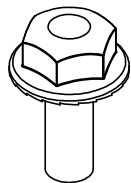
**PROVIDE CLEARANCE FOR SPACERS** - IF THE INSTALLATION VEHICLE CONTAINS A CARPET OR SUBFLOOR, USE A 1-3/16" DIAMETER CARPET CUTTER (P/N: 31183-0) AT ALL MOUNTING LOCATIONS TO OPEN UP ROOM FOR SPACERS.

**CHECK SPACER ORIENTATION** - BE SURE THAT THE INDENT IN THE SPACER COVERS THE PLUSNUT HEAD; THIS ENSURES THE MOST METAL-TO-METAL CONTACT AND REDUCES VIBRATION.

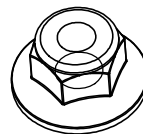
**PLUSNUT INSTALLATION** - A PLUSNUT GUN IS RECOMMENDED FOR PLUSNUT INSTALLATION FOR ITS PRODUCTION SPEED. HOWEVER, A PLUSNUT SETTING TOOL CAN ALSO BE USED (P/N: 22200-0).

**THRU-BOLT CLEARANCE** - WHEN USING A THRU-BOLT AT ANY MOUNTING LOCATION, BE SURE THAT YOUR HOLE HAS 1/16" CLEARANCE.

**FASTENERS USED**



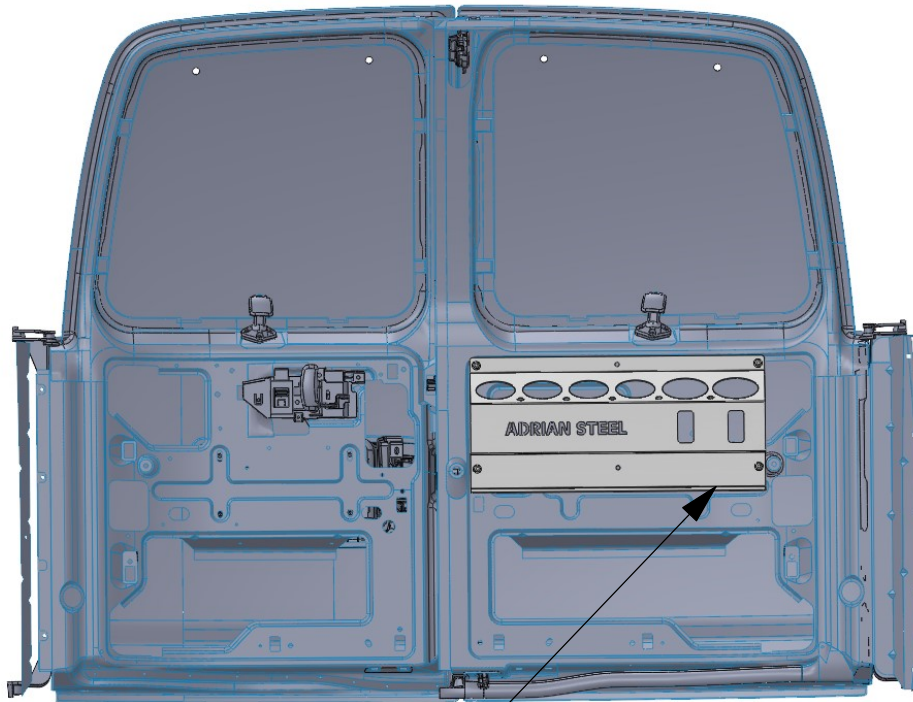
**FAS0018  
1/4-20X.62ZP  
SCREW,HH SFLNG  
QTY:4**



**FAS0055  
1/4-20 ZP  
NUT,HEX NLK FLG  
QTY:4**

**BEGIN ASSEMBLY**

**STEP 1 - CUT FOAM STRIP (26650-0) TO 23" & INSTALL ON BOTTOM LIP OF BRACKET**

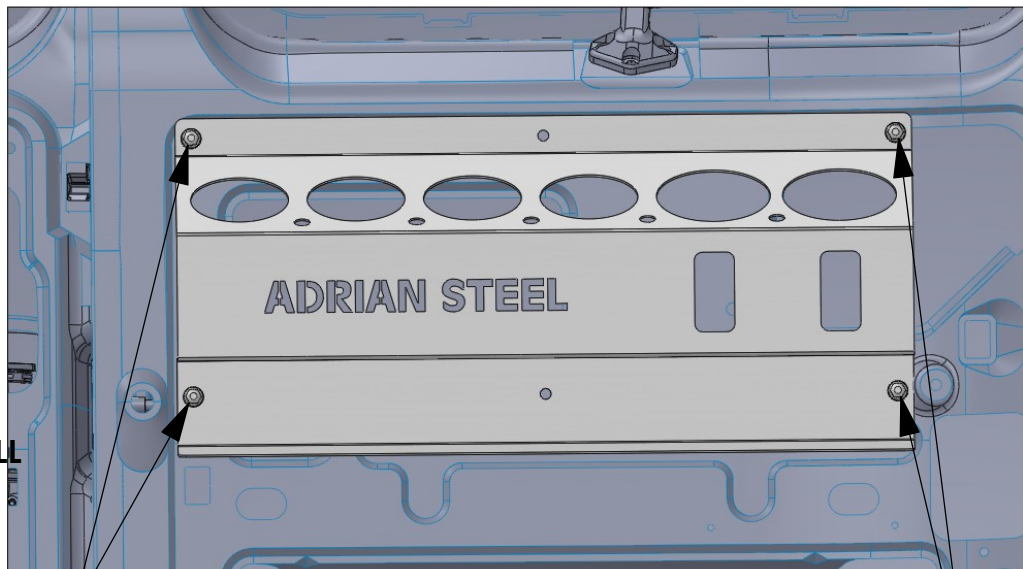


**INSTALL 23" FOAM STRIP TO LOWER SURFACE OF LP TANK BRACKET.**

**STEP 2 - INSTALL 23" BRACKET TO DOOR PANEL, PARTITION, ETC.**

**NOTE:  
4 PLACES USE  
FAS0018  
FAS0055  
11/32 DRILL**

**DRILL HOLES & INSTALL  
FASTENERS AND  
BRACKET TO REAR  
DOOR OR OTHER  
AREAS INSIDE  
VEHICLE**



**DRILL HOLES & INSTALL FASTENERS AND BRACKET TO  
REAR DOOR OR OTHER AREAS INSIDE VEHICLE**