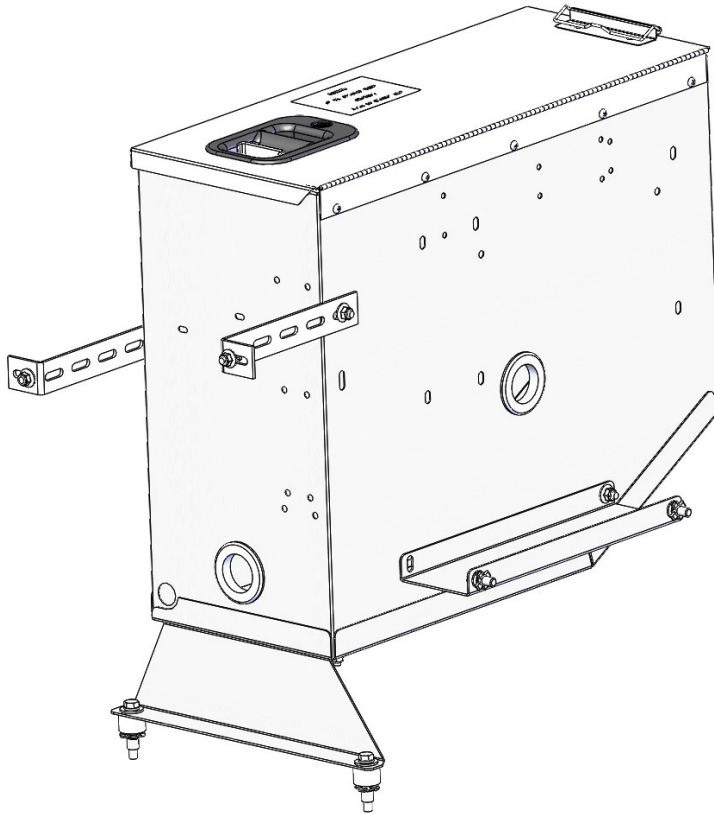


**ADRIAN STEEL®**

Cargo Management Solutions for Commercial Vehicles

CCD9, CENTER CONSOLE DESK

**PRODUCT WEIGHT****22 lbs.****WIDTH x DEPTH x HEIGHT****9 x 22.38 x 19****COLOR****GRAY****CATALOG NUMBER****CCD9**

PRODUCT FEATURES

Center console desk designed for a 2021 and newer Ford Transit. It is designed with mounting holes for a power strip with USB Connections, a PA9 for electrical use, an optional Laptop Holder Bracket, CCDLTH. This also has an optional Letter and Legal hanging file folder Brackets, CCDHF9.

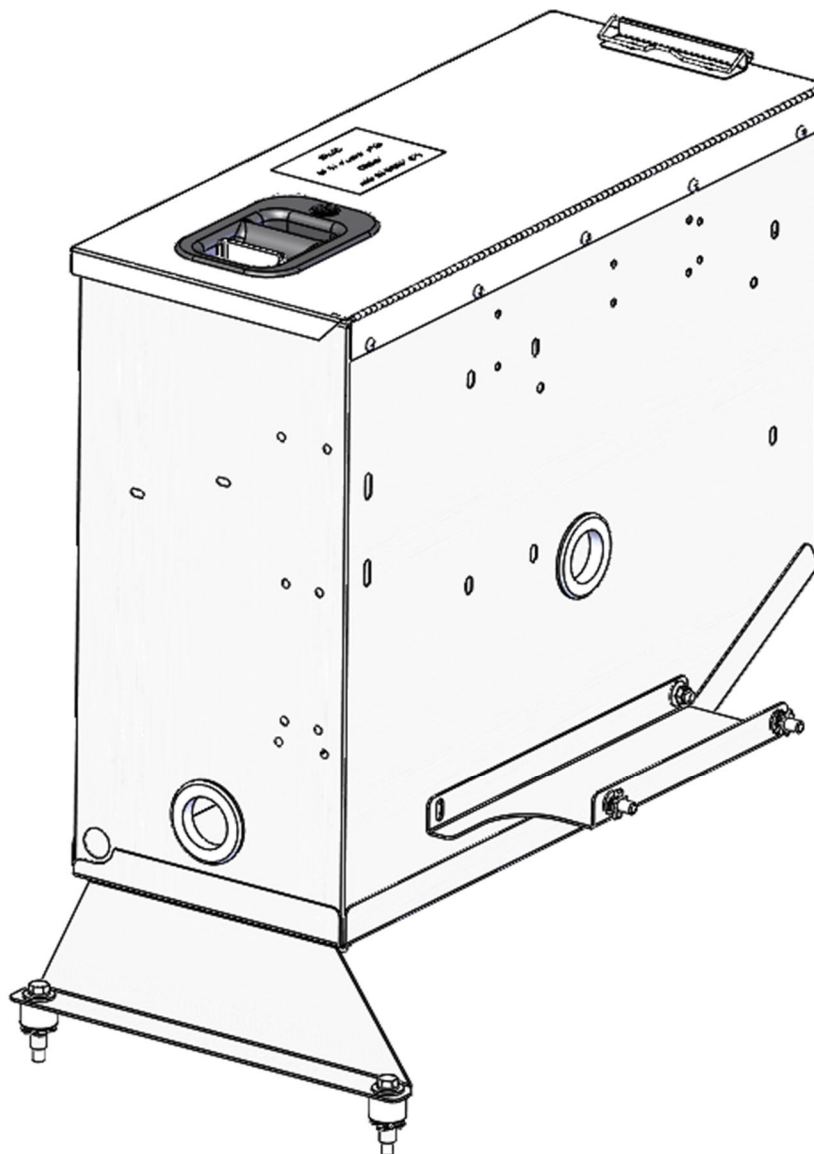
PAGE 1 of 1

The information contained in this document is the sole property of ADRIAN STEEL COMPANY. ADRIAN STEEL COMPANY retains the right to modify and/or change the product of its design at any time without prior notification.

Introduction / Comments:

This Center Console Desk is designed for storage of chargers, power strip, CCDHF9, CCDLTH, AND PA9.

Note: It is advised that all fasteners used in this assembly and installation should be checked for tightness at the following intervals: @ 2-weeks and again @ 6-weeks of operation. This preventive maintenance step must be completed to ensure your Product gives you long service life.



CCD9—CENTER CONSOLE DESK FOR 2021 TRANSIT

- PRECAUTIONS -





 **CAUTION** 
**THE USE OF AIR IMPACT TOOLS CAN
OVER-TORQUE FASTENERS AND
CAUSE FASTENER FAILURE!**



 **CAUTION** 
**ALL INSTALLATION HOLES SHOULD BE SEALED
WITH SILICON OR BUTYL SEALANT TO PREVENT
EXHAUST FUMES FROM ENTERING THE VEHICLE!**



 **DANGER** 
**INSPECT FOR FUEL TANK, FUEL LINES, BRAKE LINES, HIGH
VOLTAGE BATTERIES AND ELECTRICAL LINES PRIOR TO
DRILLING TO AVOID DAMAGING CRITICAL VEHICLE SYSTEMS
OR INJURY TO INSTALLER DURING INSTALLATION PROCESS!**



 **CAUTION** 
**TO AVOID DAMAGING THE VEHICLE ALWAYS
USE DRILL STOPS WHEN DRILLING ANY IN-
STALLATION HOLES!**



- IMPORTANT WARRANTY REQUIREMENTS -

1. SUBSTITUTING ADRIAN STEEL SPECIFIED FASTENERS FOR ASSEMBLY AND/OR INSTALLATION WILL VOID YOUR PRODUCT WARRANTY.
2. ALL HOLES DRILLED INTO VEHICLE SHOULD HAVE THE RAW METAL EDGES SEALED WITH A SELF-ETCHING PRIMER TO RESIST CORROSION AND POTENTIAL FASTENER POINT FAILURE.
3. ALL FASTENERS USED IN THE INSTALLATION OF THIS PRODUCT SHOULD BE TIGHTENED TO THE TORQUE(S) SPECIFIED IN THESE INSTRUCTIONS.
4. THESE INSTRUCTIONS SHOULD BE KEPT WITH THE VEHICLE.

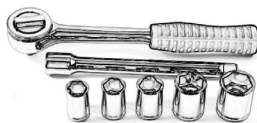
THE BASIC TOOLS NEEDED FOR MOST INSTALLATIONS



DRILL



DRILL BIT WITH
STOP



RATCHET, SOCKETS
AND/OR WRENCHES



SCREWDRIVERS



MEASURING TAPE

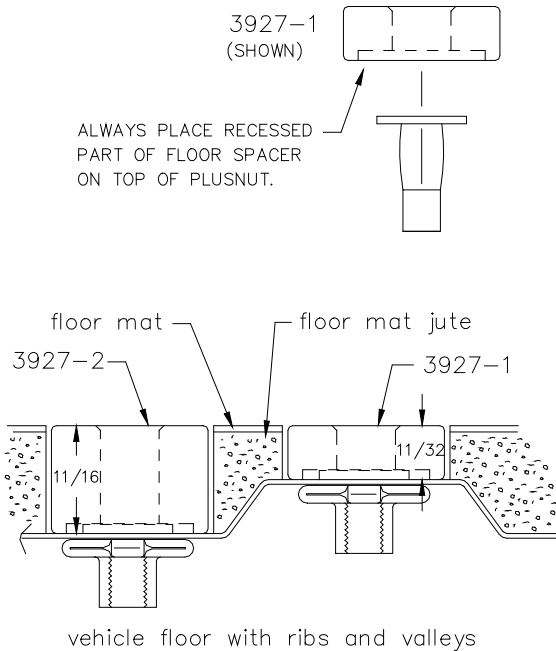
ADDITIONAL TOOLS MAY BE NEEDED FOR THIS INSTALLATION AND THEY WILL BE IDENTIFIED IN THE STEPS THAT FOLLOW.

If your vehicle contains carpet or a rubber floor mat you will need to prepare the mounting location. Position the product to be installed into the vehicle and once you are satisfied with the mounting locations, mark the mounting locations. Using a 1-3/16" diameter carpet cutter (P/N: 31183-0). Select the appropriate floor spacers as shown in the illustration. Set those aside for use later into the installation process.

Using the correct drill bit size for the selected plusnut, drill the mounting holes in the vehicle sheet metal to prepare for installing the plusnuts.

If you are thru-bolting at any of the locations simply drill a hole that is 1/16" larger than the bolt size(s) for those locations.

Once you have drilled the holes into the vehicle, the raw metal edges should be sealed using a self-etching primer to resist corrosion and potential fastener point failure.



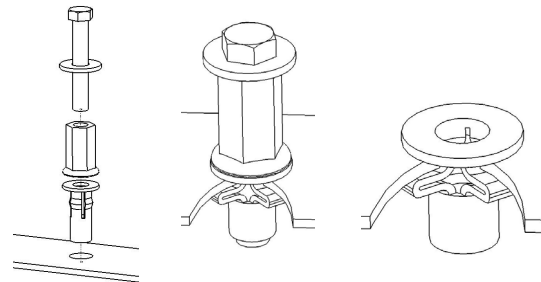
A PLUSNUT (RIVNUT) SETTING TOOL IS REQUIRED FOR PLUSNUT (RIVNUT) INSTALLATION AND IS SUPPLIED WITH THIS KIT. OR USE AN AIR POWERED PLUSNUT SETTING GUN.

1/4-20UNC Plusnut (FAS0052) Use 3/8" dia. drill w/stop

FAS0080 SCREW, HXHD, 1/4-20UNCx2.00", G8
FAS0067 WASHER, FLAT, 1/4"ID
22200-0 PLUSNUT TOOL

5/16-18UNC Plusnut (FAS0091) Use 1/2" dia. drill w/stop

FAS0095 SCREW, HXHD, 5/16-18UNCx2.00", G8
FAS0086 WASHER, FLAT, 5/16"ID
22200-0 PLUSNUT TOOL

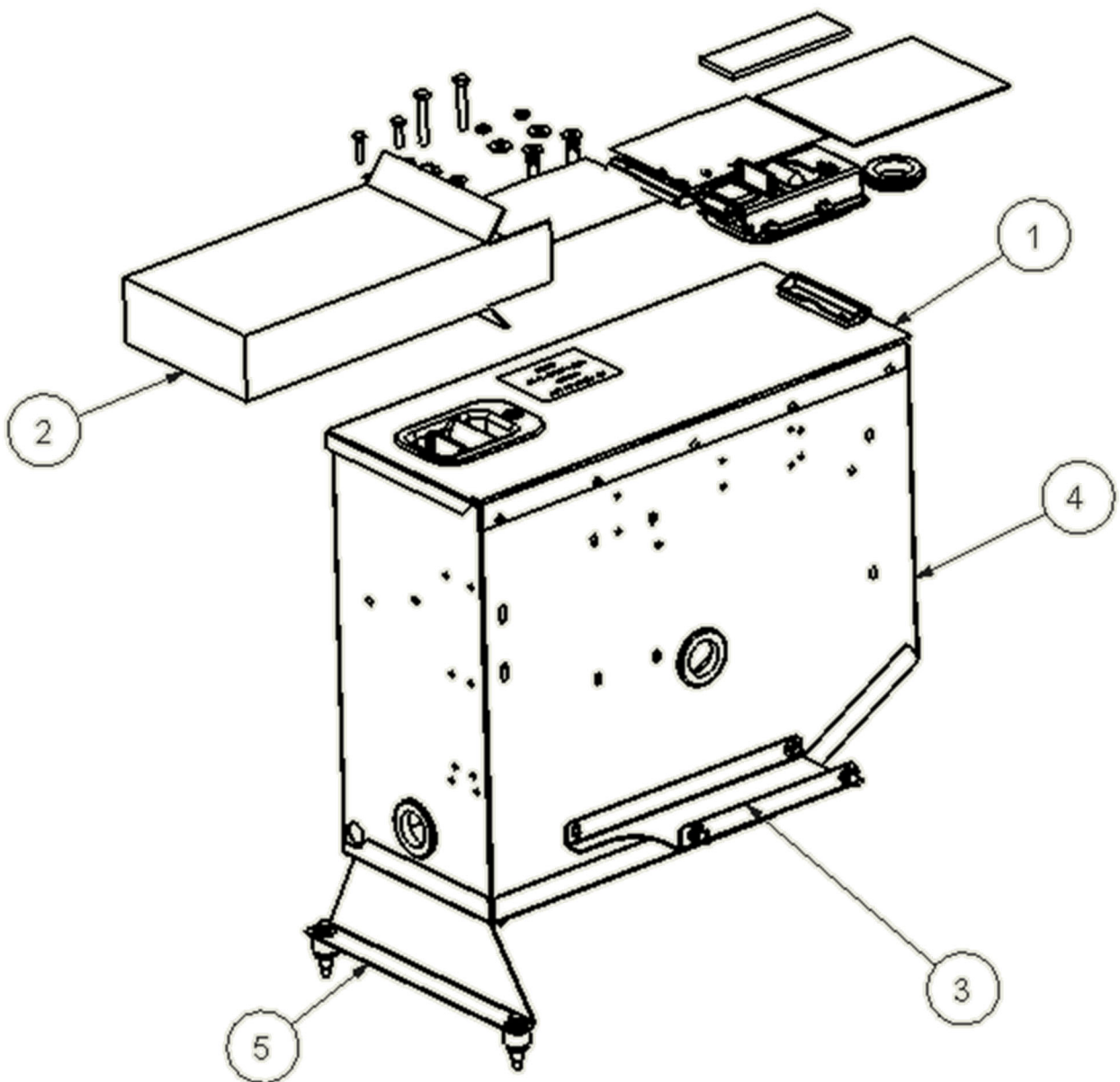


Place barrel of the plusnut body in sheet metal thru hole until flange is flush with sheet metal.

Using a 9/16" combination wrench of plusnut tool body and a second hand wrench, ratchet, or air tool, rotate the hex bolt head CW to draw plus nut flanges up (set the plusnut).

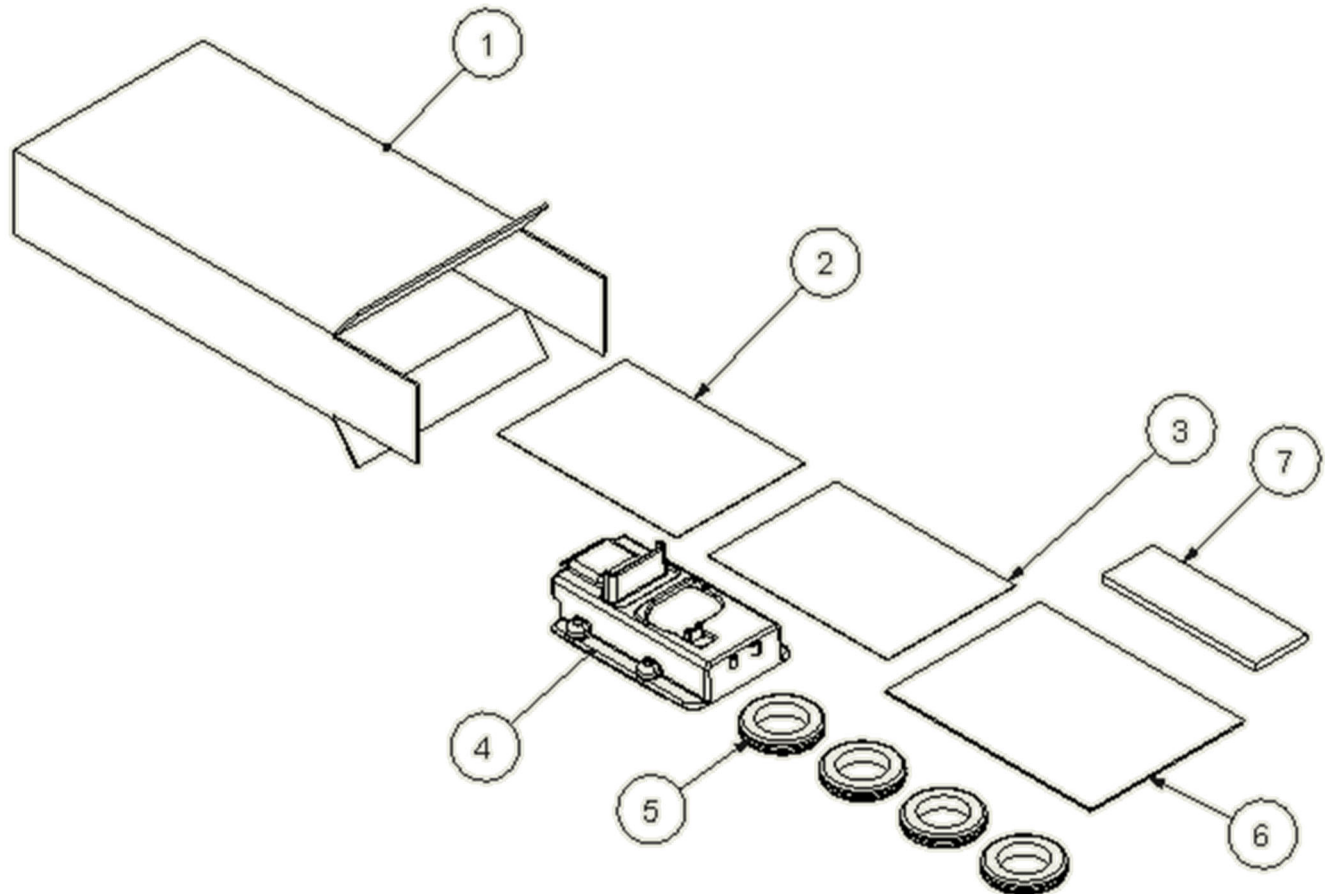
CCD9 CENTER CONSOLE DESK FOR 2021 TRANSIT

ITEM NO.	PART NUMBER	DESCRIPTION	
1	QE8263-120-B	CCD9, LID WELDMENT, BLACK	1
2	HDWCCD9FT	HARDWARE KIT FOR CCD9FT	1
3	QE8263-111-G	CCD9, SIDE MTG BRACKET	1
4	QE8263-115-G	CCD9, BASE WELDMENT,GRAY	1
5	QE8263-113-G	CCD9FT, FLOOR MTG BRACKET	1



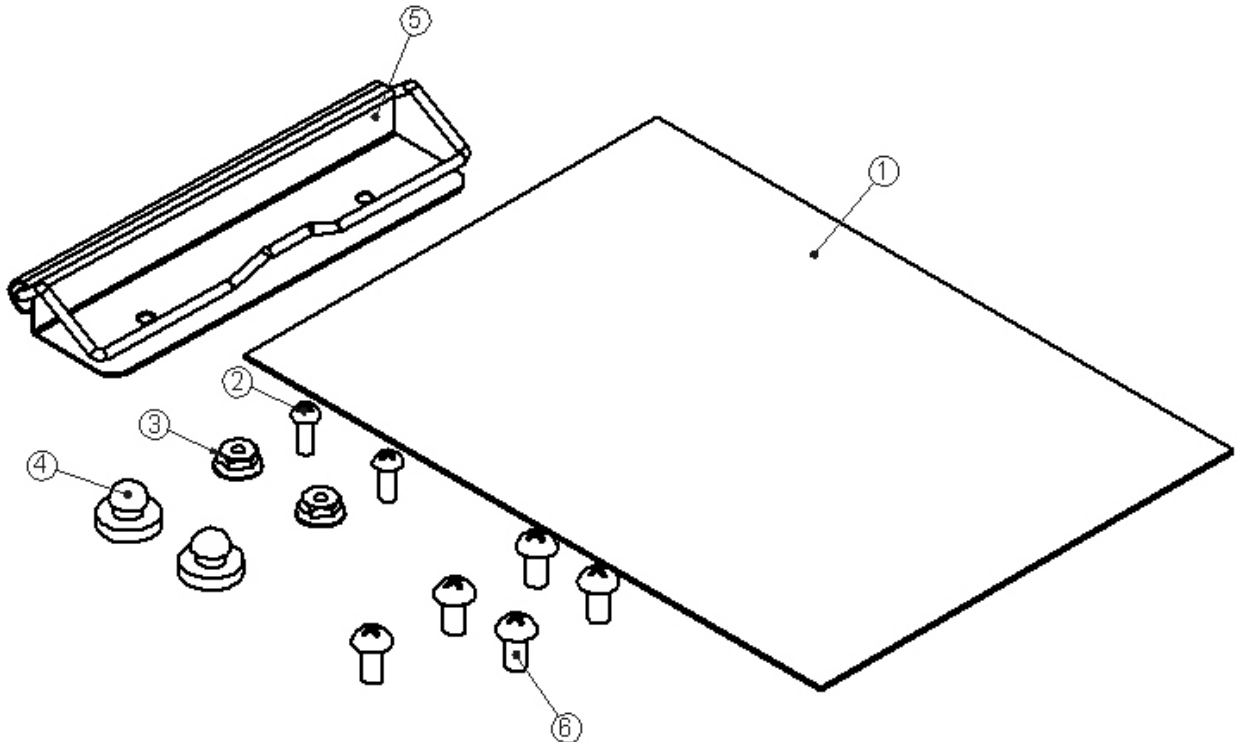
HDWCCD9 CCD9 HARD WARE KIT

ITEM NO.	PART NUMBER	DESCRIPTION	
1	CRT25386-1	HARDWARE BOX FOR CCD	1
2	BAGCCD9	FASTENER BAG FOR CCD9	1
3	HDW50050	HARDWARE BAG FOR CCD10 AND CCD12	1
4	35295-B	MOLDED SLAM LATCH W/ LOCK	1
5	44388	GROMMET, RUBBER, 1.5" ID	4
6	63875	INSTALL INSTRUCTIONS CCD9	1
7	52376	Foam Strip, 1/4X2X6	1



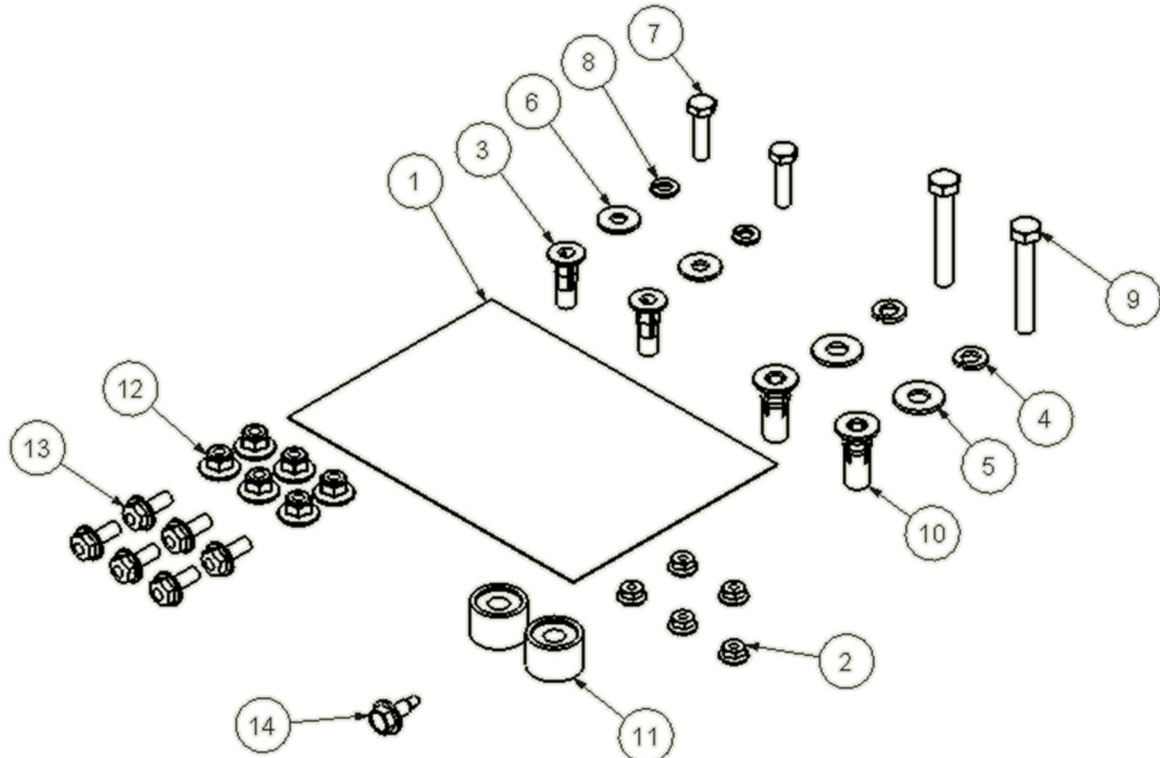
HDW50050 HARDWARE BAG FOR CCD10 & CCD12

ITEM NO.	PART NUMBER	DESCRIPTION	QTY.
1	BAG0507-A	5" x 7" 3MIL AUTOBAG	1
2	FAS0137	Screw, Round Phillips Head, #6-32x0.375, Zinc plate	2
3	FAS0138	Nut, Hex Flange, #6-32, Zinc Plate	2
4	34341-0	9309K16 MCMASTER CARR BUMPER	2
5	25384-0	SPRING CLIP, CCD	1
6	FAS0030	Screw, Round Phillips Head, #10-24x0.375	5

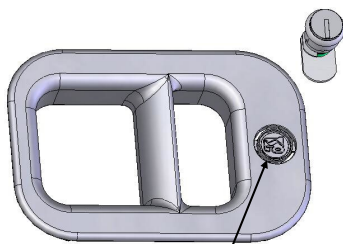
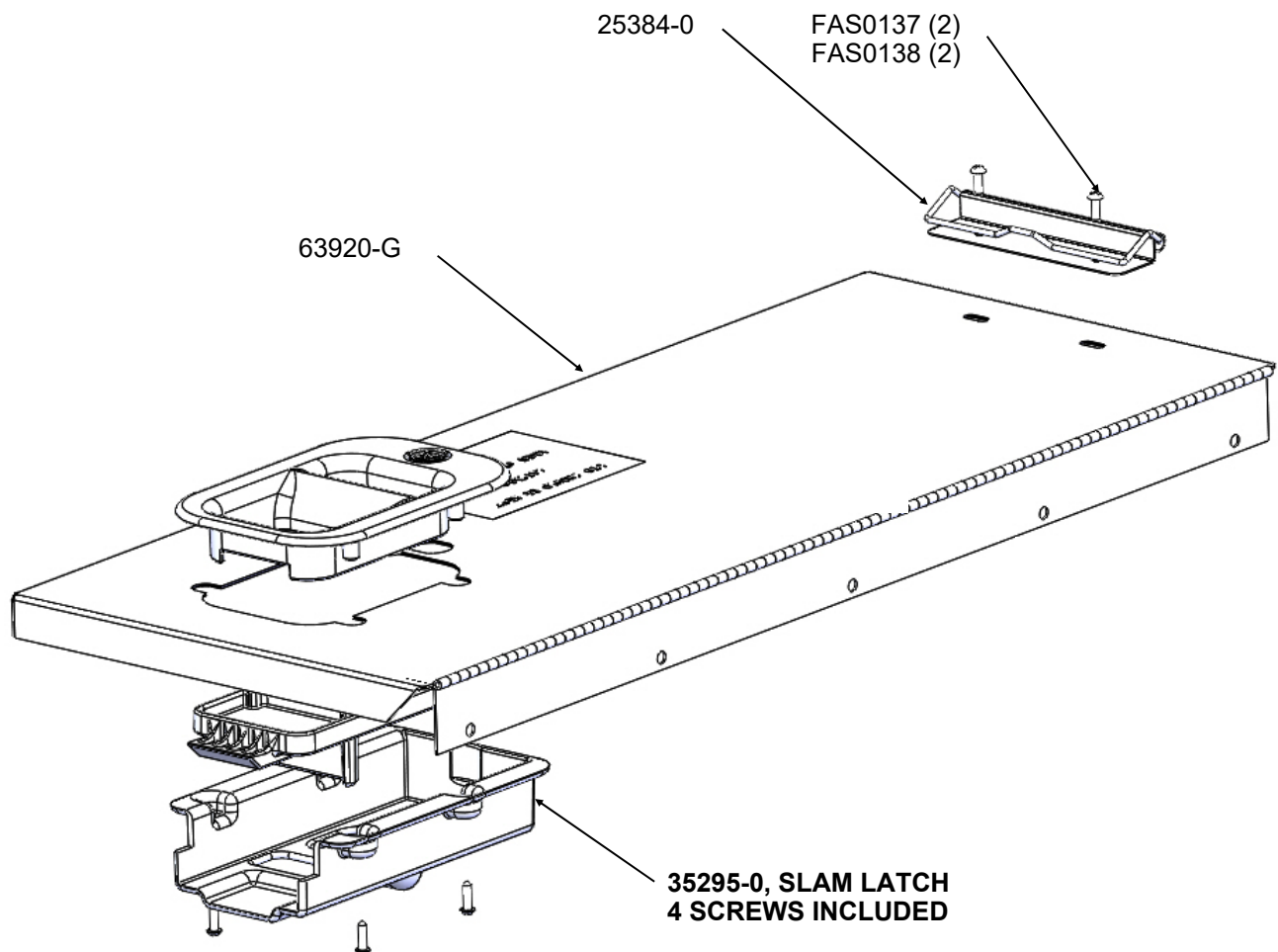


BAGCCD9 FASTENER BAG FOR CCD9

ITEM NO.	PART NUMBER	DESCRIPTION	QTY.
1	BAG0507-A	5" x 7" 3MIL AUTO BAG	1
2	FAS0020	Nut, Hex Flange, #10-24	5
3	FAS0052	PLUSNUT, 1/4-20 PB DC	2
4	FAS0098	Washer, Lock, Split, 5/16, Zinc Plate	2
5	FAS0112	WASHER, FLAT USS 5/16 ZN	2
6	FAS0067	WASHER, FLAT USS 1/4 ZP	2
7	FAS0078	SCREW, HH 1/4-20X1 G8 ZP	2
8	FAS0060	WASHER, LCK SPLIT 1/4 ZP	2
9	FAS0095	Screw, Hex Hd, 5/16-18x2.00, Grade 8	2
10	FAS0091	Plusnut, 5/16	2
11	03927-2	SPACER, FLR, 1010, 11/16 ZP	2
12	FAS0055	NUT, HEX NLK FLG 1/4-20 ZP	6
13	FAS0018	SCREW, HH SFLNG 1/4-20X.62 ZP	6
14	FAS0641	SCREW, HH TEK 1/4-20X.7 ZP	1



(1) LID ASSEMBLY INSTALL 63920-G



Knockout in Slam Latch for Lock Cylinder. Remove prior to assembling Lock to Slam Latch.

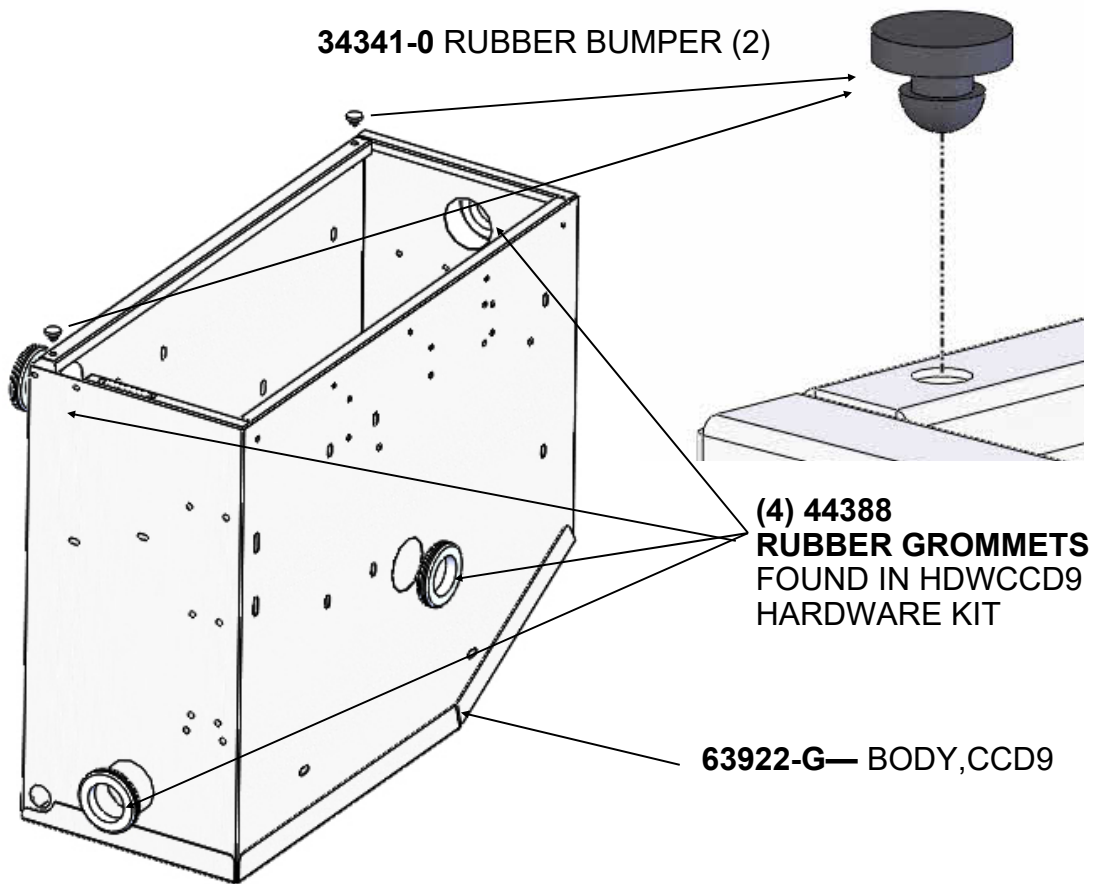
**35296-0
Lock Asm.
1 Req'd**



There are 2 versions of the Lock, One snaps into Slam Latch, the alternate is held to Slam Latch by a Hex Nut (included with Lock) on backside.

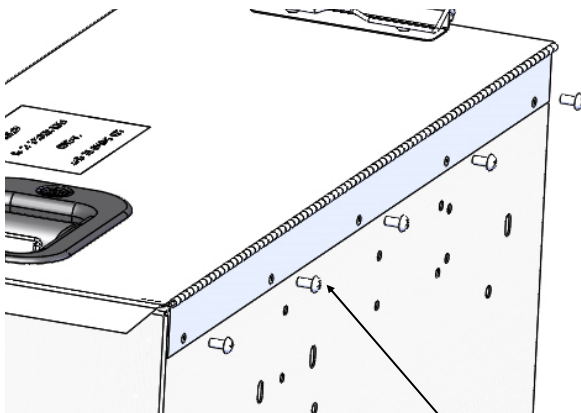
Lock Cam orientation shown is in the locked position. Unlocked position is 90 degrees Counterclockwise from position shown. Flats on Cylinder run perpendicular to Cam in locked position (shown). Install in position shown.

(2A) ASSEMBLE THE BUMPERS AND GROMMETS



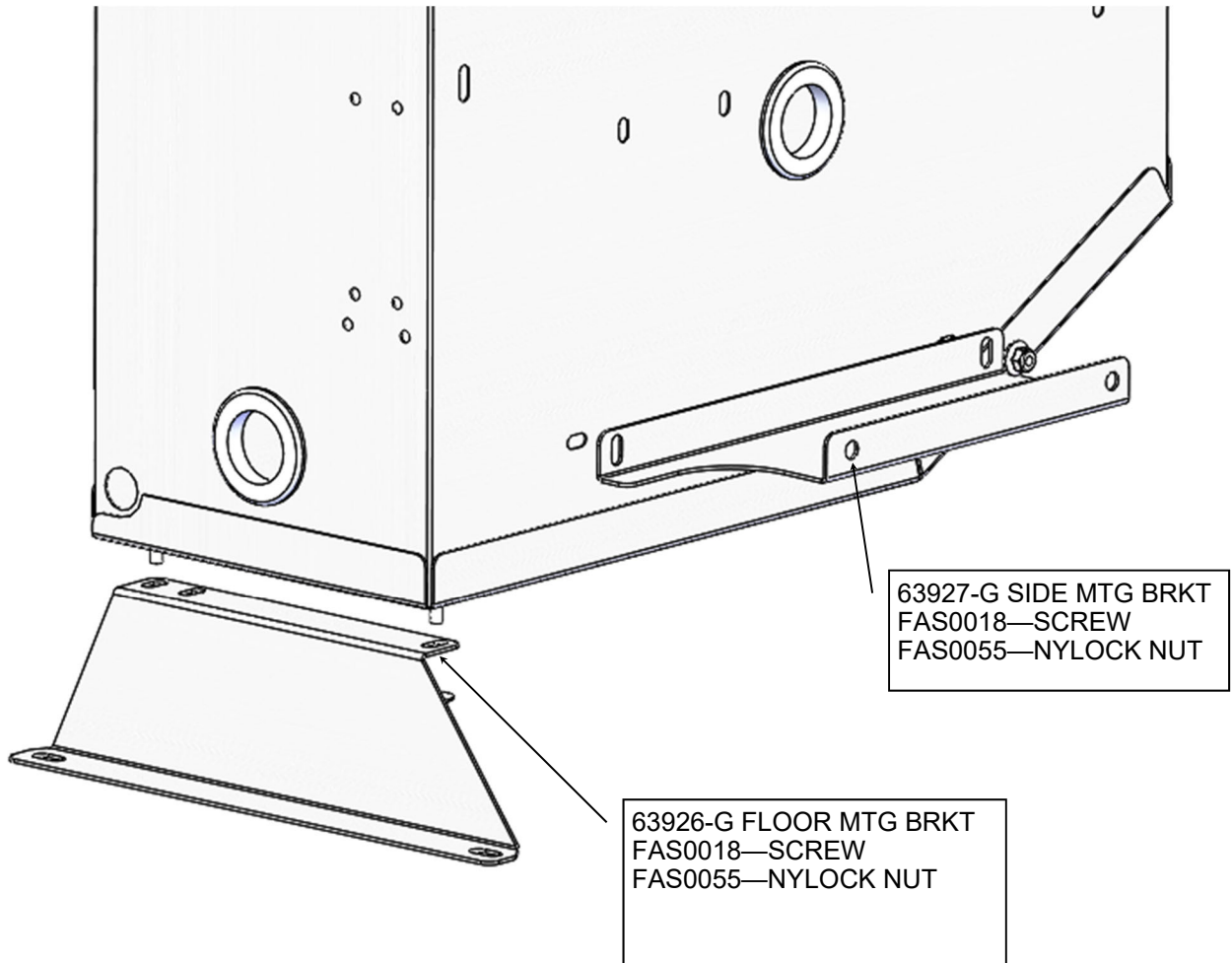
PRIOR TO INSTALLING THE LID, INSTALL ANY ACCESSORIES INSIDE CCD WITH INSTRUCTIONS SUPPLIED WITH ACCESSORIES.

(2B) ASSEMBLE LID ASSEMBLY

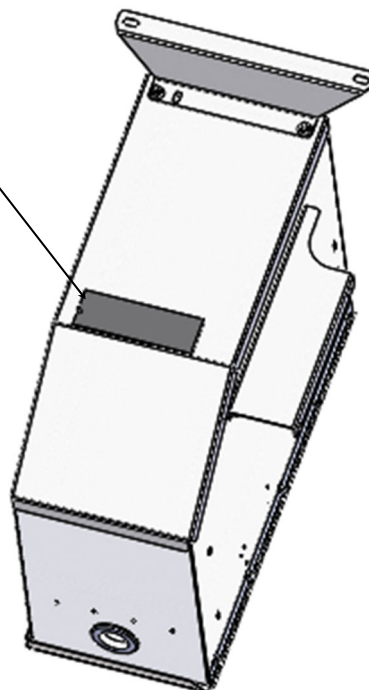


**INSTALL (5) FAS0020 #10-24 FLANGE NUT,
AND (5) FAS0030 #10-24X3/8" PH SCREWS.
THRU LID ASSEMBLY AND BODY**

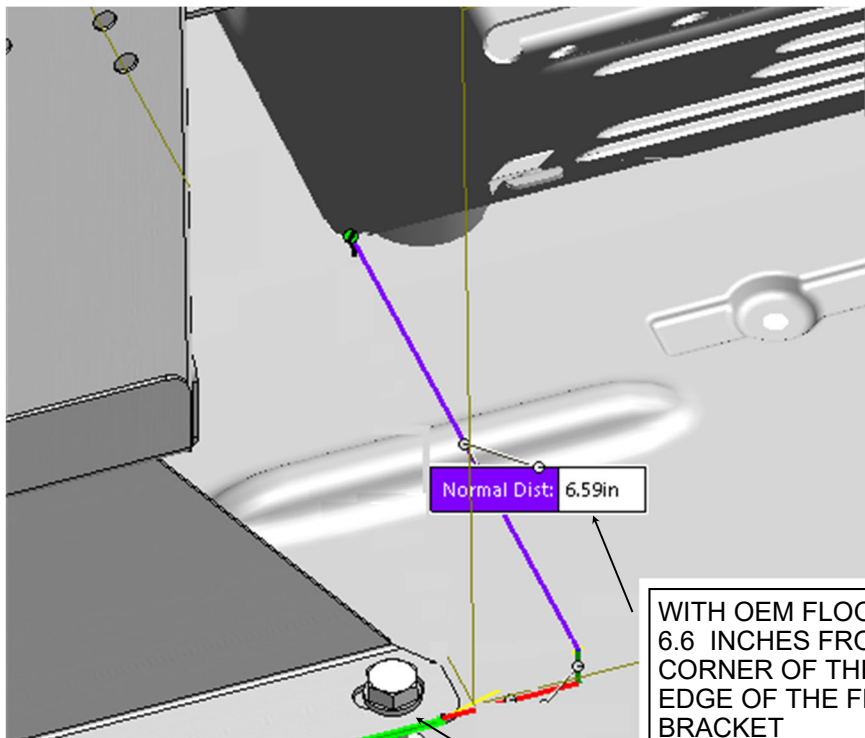
(3) INSTALL MTG PLATES



BOTTOM OF THE CCD9
52376—FOAM TAPE
APPROXIMATELY AN INCH
FROM THE EDGE

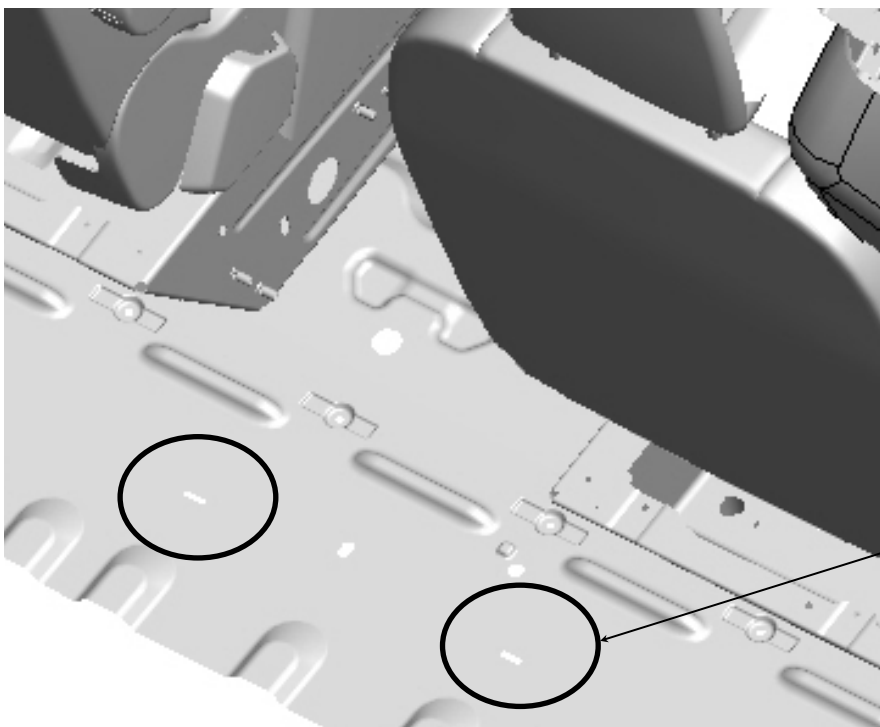


(4) LOCATE AND DRILL AND DRILL HOLES.



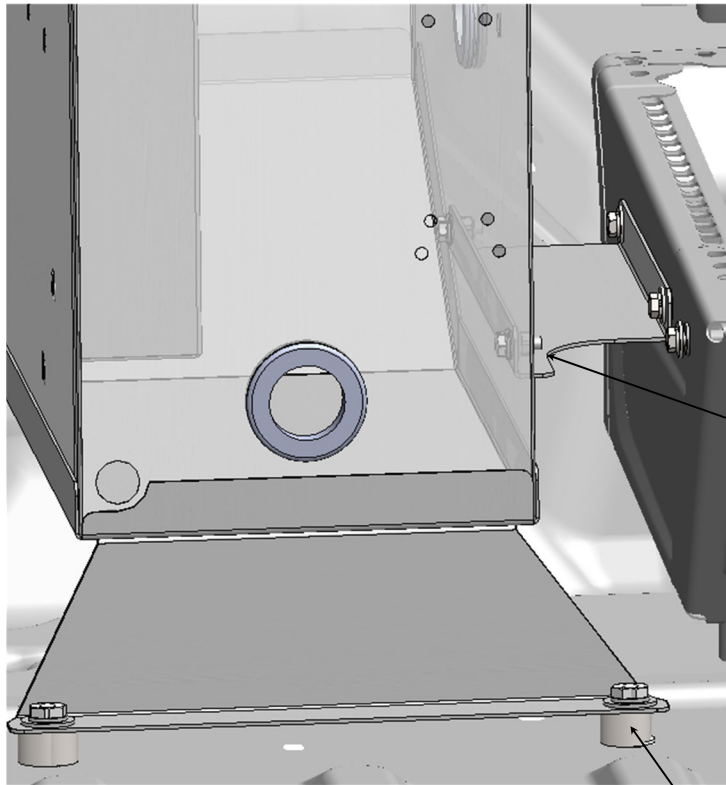
WITH OEM FLOOR MAT
6.6 INCHES FROM THE BOTTOM
CORNER OF THE SEAT TO THE
EDGE OF THE FLOOR MOUNTING
BRACKET

TRANSFER HOLE LOCATION
USE A 1" DIAM. HOLE SAW TO
CUT THRU THE CARPET.
1/2 DIA THRU FOR
FAS0091 PLUSNUTS



NO FLOOR MAT, YOU CAN
SEE THE MOUNTING HOLE
LOCATIONS , CENTERED ON
THE SLOTS
1/2 DIA THRU FOR
FAS0091 PLUSNUTS

(5) PLACE CCD9 BACK IN YOUR VEHICLE. MARK AND DRILL HOLES

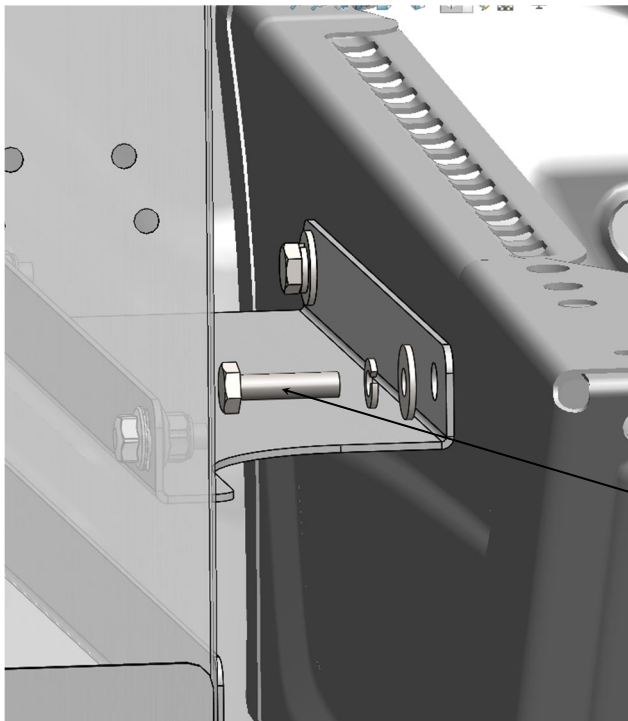


2

TRANSFER MOUNTING HOLES IN
THE SIDE OF THE SEAT (2) PLACES
3/8 DIA THRU—(2) PLACES
FOR FAS0052 (2) PLUSNUT

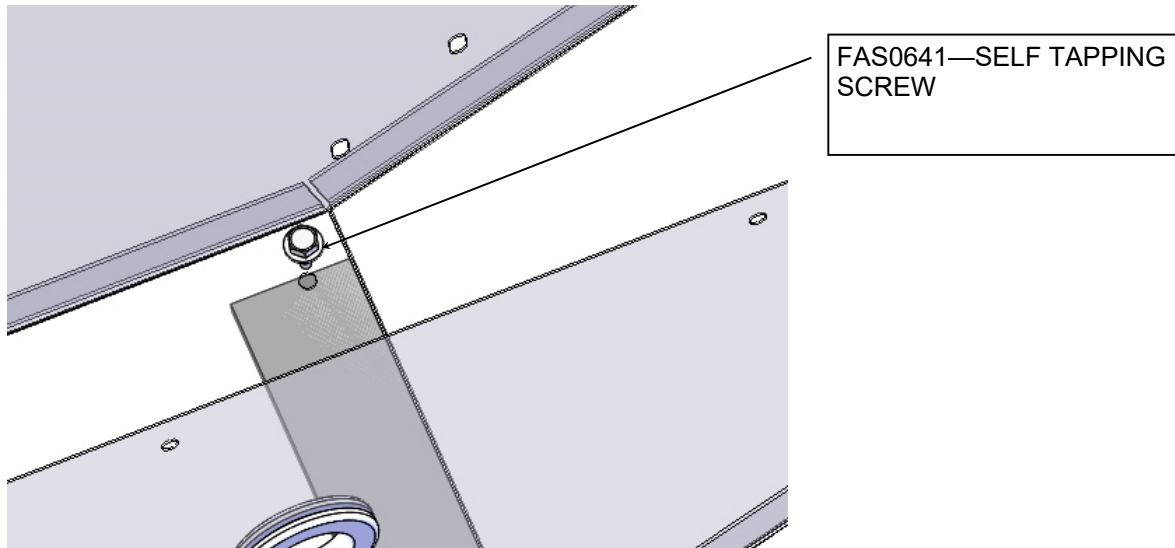
1

ADD SPACERS AND THE BOLTS
TO LOCATE THE CCD9
03927-2—TALL SPACER (2)
FAS0095—BOLT (2)

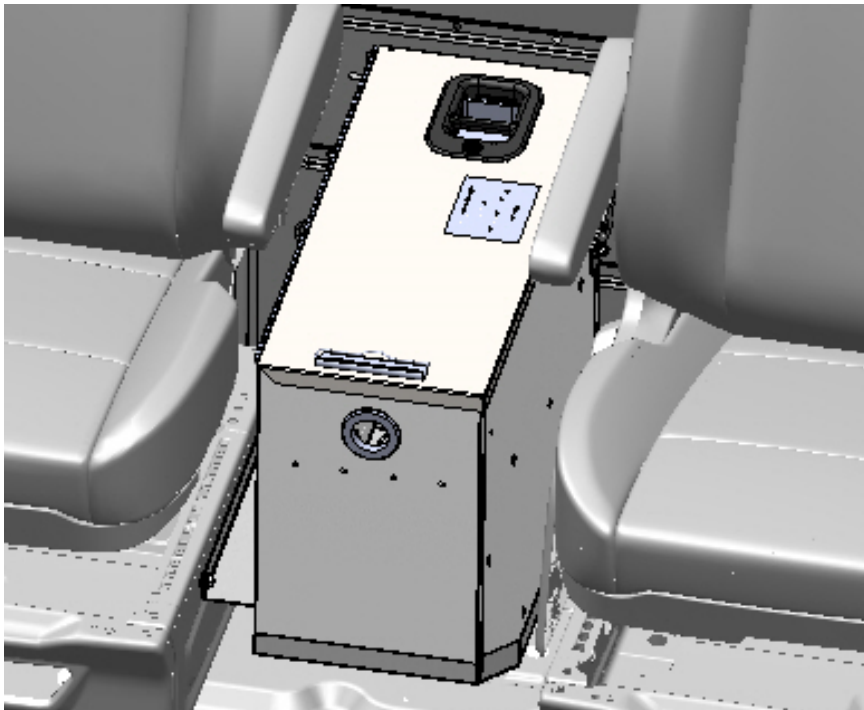


FAS0078—BOLT (2)
FAS0060—LW (2)
FAS0067—FW (2)

(7) ADD SELF TAPPING SCREW FROM THE FRONT INSIDE OF THE BOX TO THE FLOOR



YOUR INSTALLATION IS NOW COMPLETE



**DOUBLE CHECK ALL FASTENER LOCATIONS TO BE SURE THAT ALL FASTENERS ARE TIGHTENED TO SPECIFICATIONS.
YOUR INSTALLATION IS NOW COMPLETE!
STOW THIS COPY IN THE VEHICLE FOR FUTURE REFERENCES!**