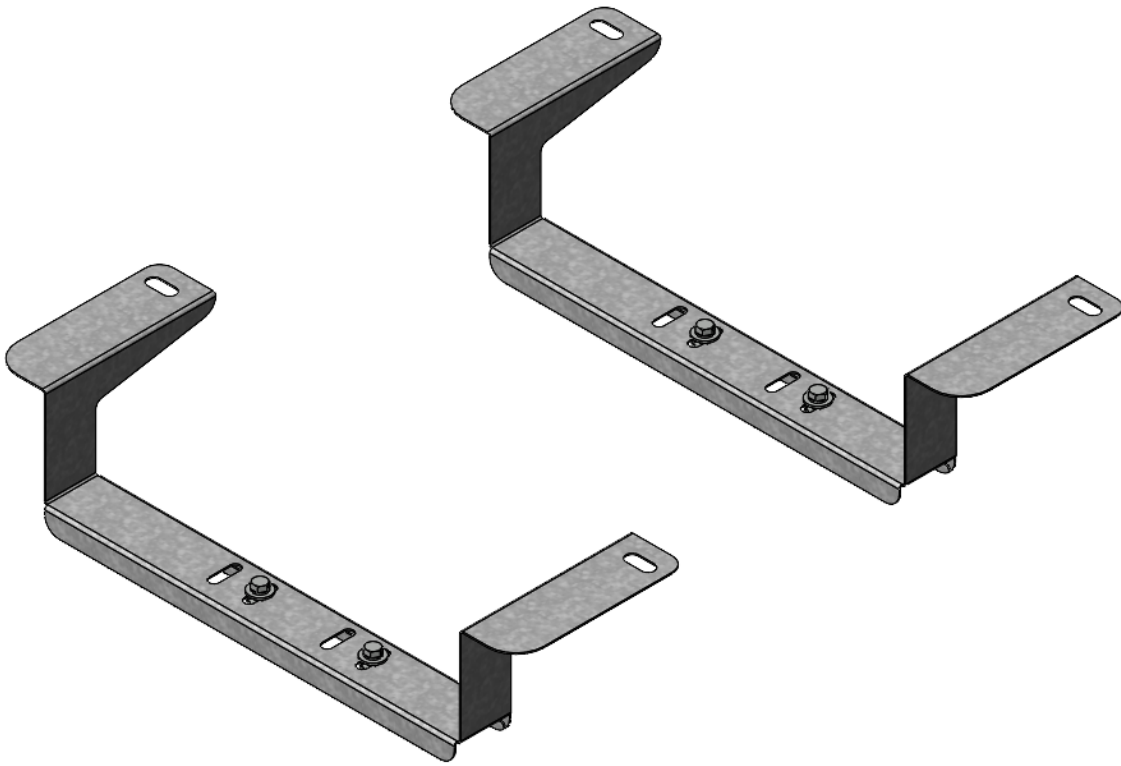


# INSTALLATION GUIDE



## 5041 Raised Base for 5040 Cab Box

Transit ( Steel )



# QUICK START GUIDE

## Phase 1 - Assembly

❑ 1.1 Setup.....	3
------------------	---

## Phase 2 - Installation

❑ 2.1 Installation.....	4 - 5
❑ 2.2 Install With 5040 Cab Box.....	6

# REQUIRED ITEMS



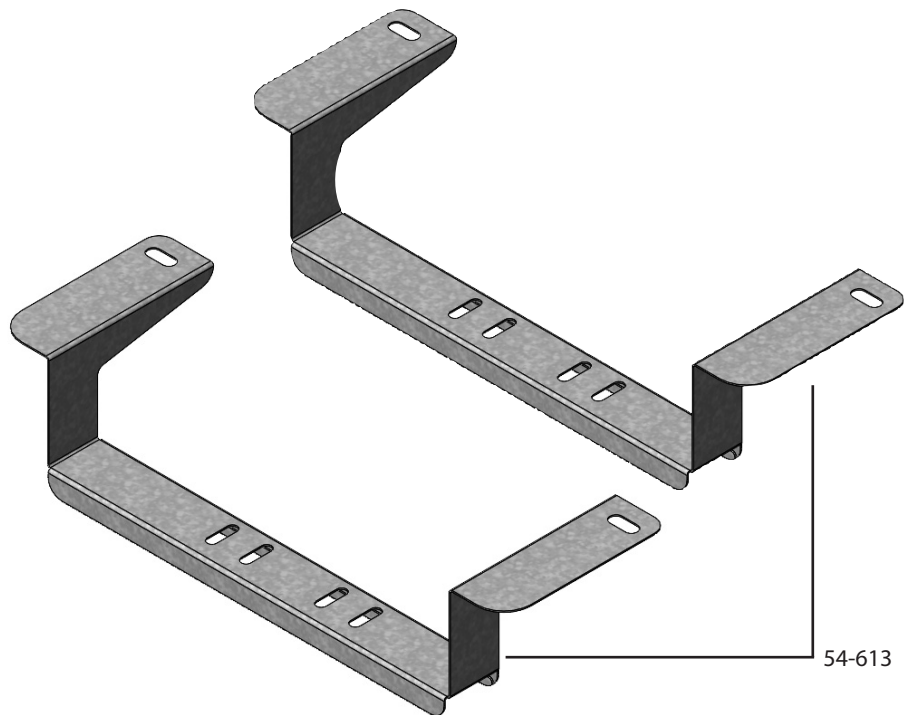
1  
PERSON

- ❑ Cordless Impact
- ❑ Ratchet
- ❑ T40 Torx Bit

# PHASE 1 – ASSEMBLY

## 1.1 SETUP

1.1.1 Unpack all the components and compare with the bill of materials.



1.1.2 Verify all parts are present.

### BILL OF MATERIALS

Item No.	Description	Qty.
54-613	Transit 2020, Cab Box Support, Front	2
94-5005	Assembly Fastener Kit	1

1.1.3 Fastener kits.

94-5005 Fastener Kit



Fastener Assembly

4x



# 90-110

Hex Bolt  
1/4"-20x 3/4"  
GR-5 ZINC

4x



# 94-201

Nut, Clip-On  
1/4"-20

4x



# 98-112

Flat Washer  
1/4"  
ZINC

4x



# 98-118

Lock Washer  
Regular 1/4"  
ZINC

4x



#90-110 Hex Bolt 1/4"x3/4"



#98-118 Lock Washer



#98-112 Flat Washer



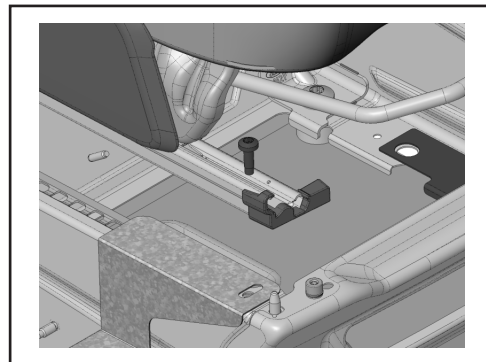
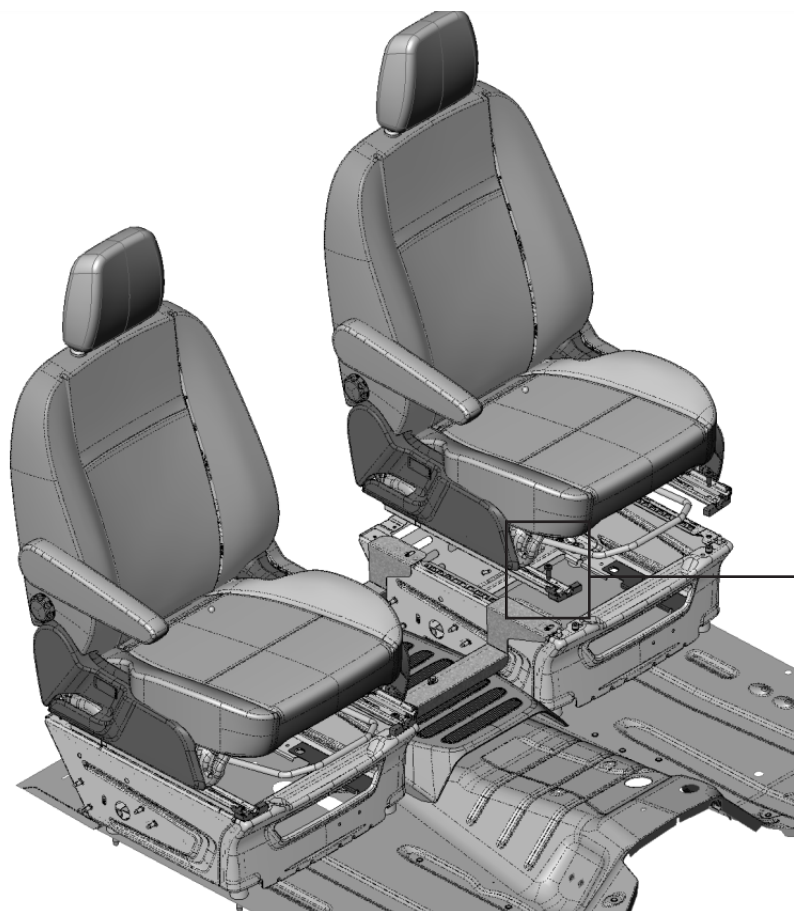
#94-201 Nut, Clip-On

# PHASE 2 – INSTALLATION

## 2.1 INSTALLATION

- 2.1.1 • To mount both cab box brackets, both front seats need to be loosened from their base.  
• On each seat, remove the 2 inner Torx bolts and loosen the 2 outer Torx bolts.

NOTE: Move the seats forward and rearward to gain access to the bolts.

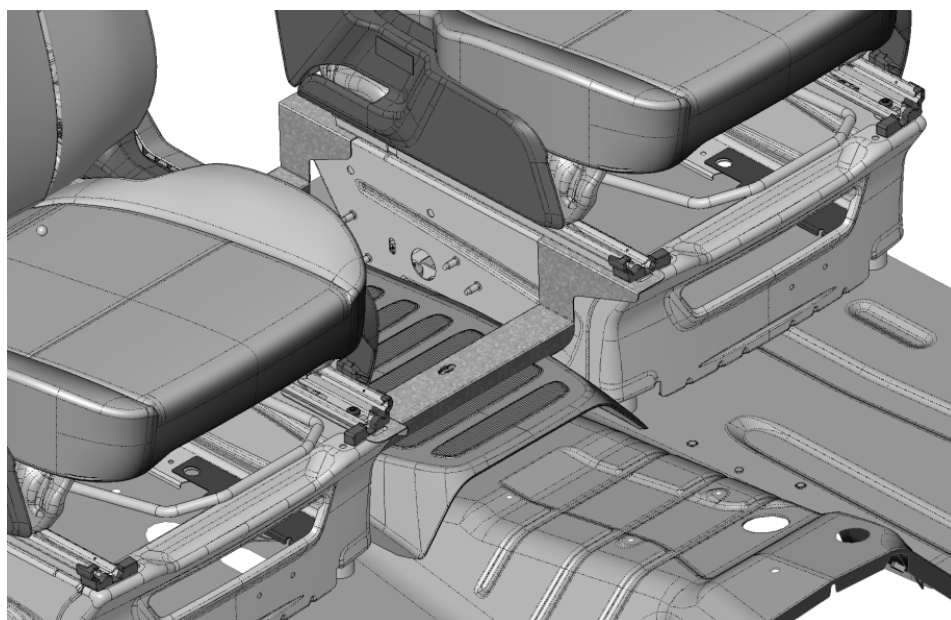
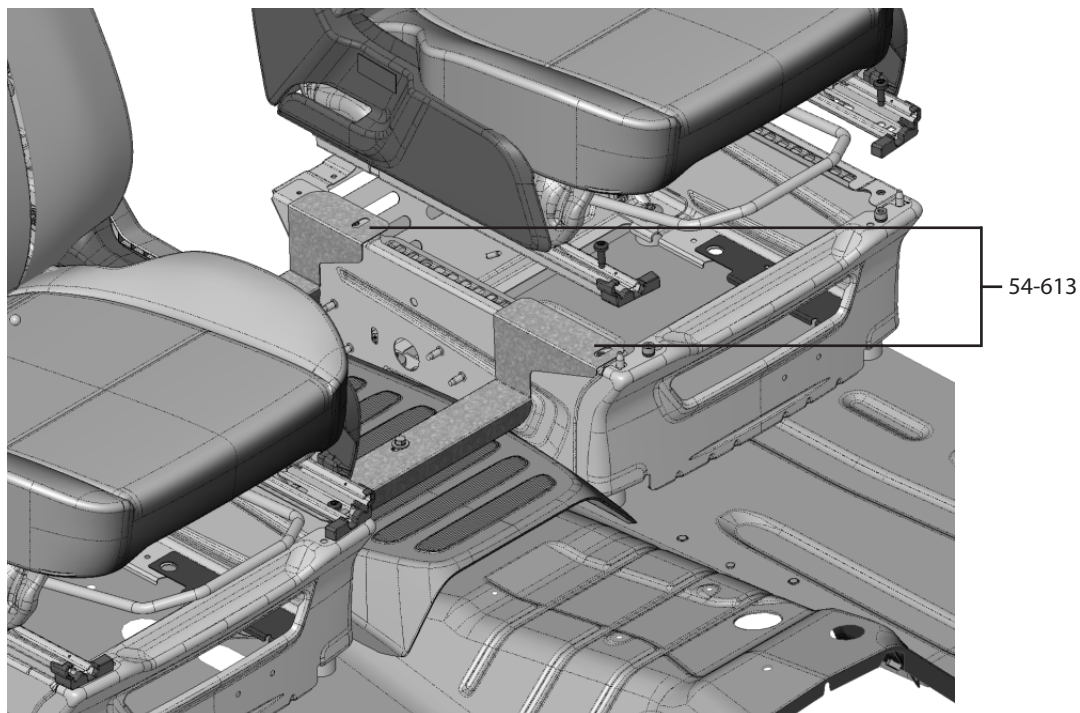


TOOLS  
□ T40 Torx bit

# PHASE 2 – INSTALLATION

## 2.1 INSTALLATION

- 2.1.2 • Place the cab box brackets over the seat bases. Take note of the orientation.
- Replace the seats.
  - Install the Torx bolts using the recommended factory torque setting.

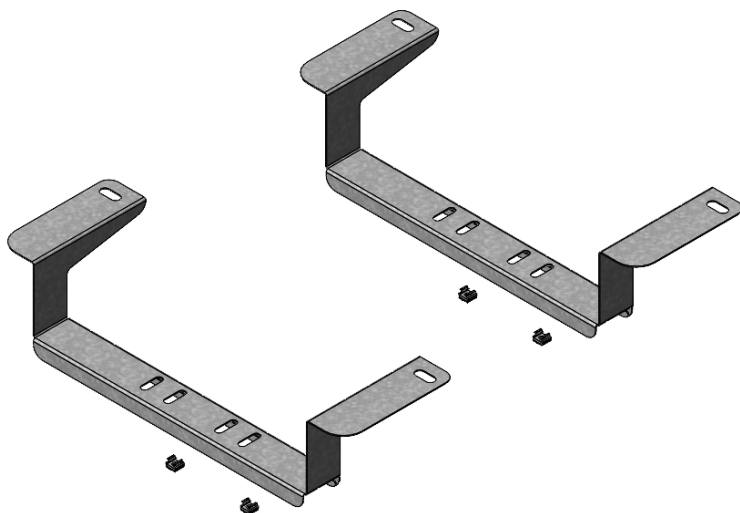


TOOLS  
□ T40 Torx bit

# PHASE 2 – INSTALLATION

## 2.2 INSTALL WITH 5040 CAB BOX

2.2.1 • Install the Clip-On Nuts on the underside of both cab box brackets.



### NOTE:

If there is a hand brake, use the side slots on both box supports.

If there is no hand brake, use the center slots on both box supports.

### HARDWARE USED

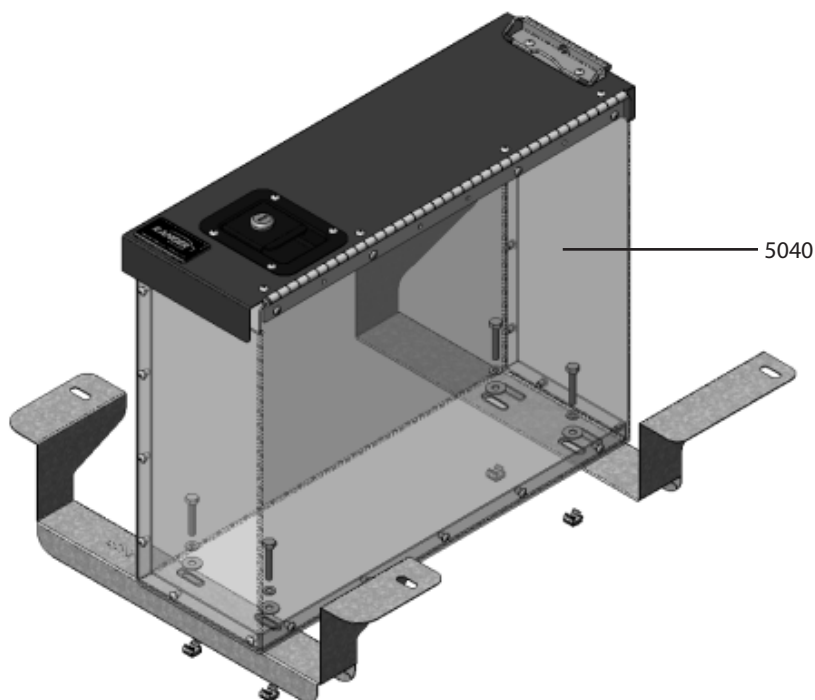
4X



#94-201 Nut, Clip-On

2.2.2 • Place and attach the 5040 Cab Box on the brackets.

NOTE: 5040 Cab Box is a separate unit.



### TOOLS

- ☐ Cordless Impact
- ☐ 7/16" Driver Bit

### HARDWARE USED

4X



#90-110 Hex Bolt 1/4"x3/4"



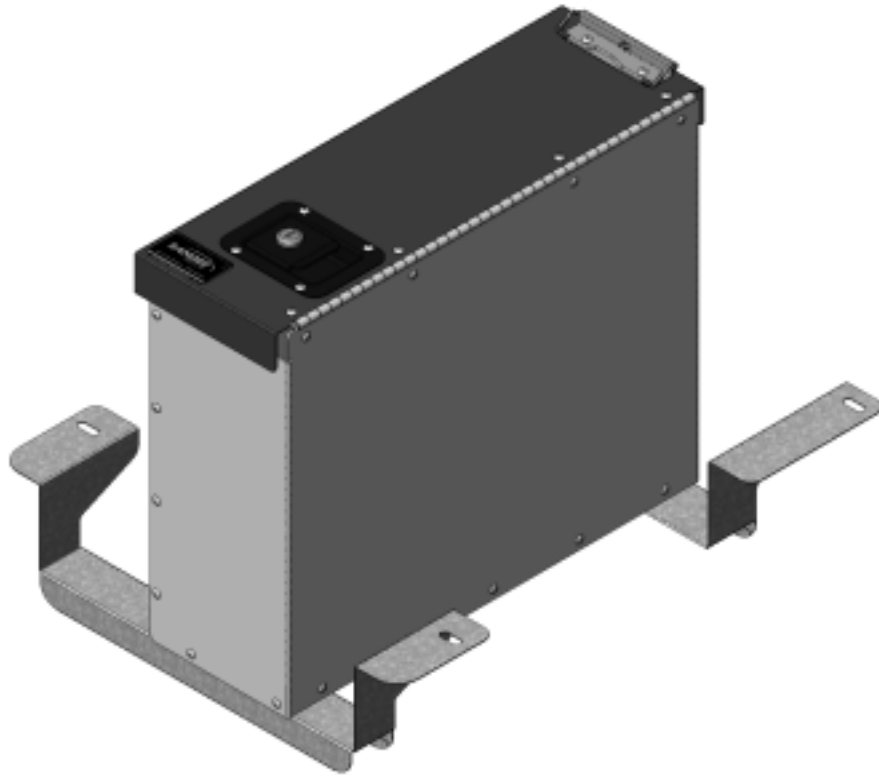
#98-118 Lock Washer



#98-112 Flat Washer



#94-201 Nut, Clip-On



You have successfully installed your  
5041 Raised Base.

Thank you for doing business with us.  
Ranger Design

For any feedback or suggestions you may have, please contact: [cs@rangerdesign.com](mailto:cs@rangerdesign.com)

